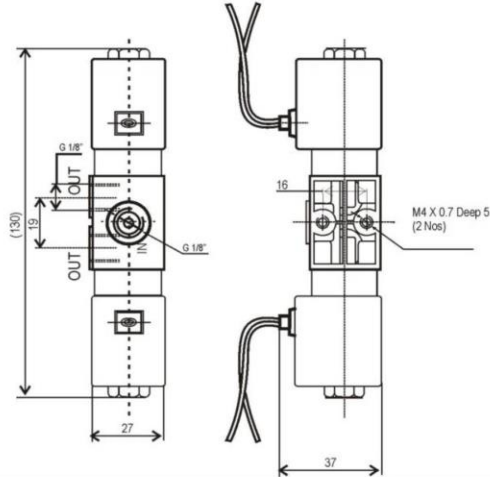
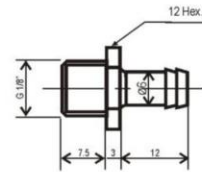


1 IN 2 OUT 2/2 WAY DIRECT ACTING SOLENOID VALVE WITH 1/8" SCREWED FEMALE CONNECTION



1/8" x 6 mm HOSE CONNECTOR



All dimensions are in mm

1 IN 2 OUT 2/2 WAY DIRECT ACTING SOLENOID VALVE FOR DENTAL CHAIR

Model	: CD13
Configuration	: 2/2 way Direct Acting,N.C.
Working Pressure	: 0 to 4 Bar
Electrical Connection	: Fly Wire
Nominal Voltages Available	: 12V,24V,36V,48V DC 24V,36V,48V,110V,230V AC
Coil Insulation	: Class 'F' Confirming to IP65
Coil Type	: Fully Moulded
End Connections	: 1/8"(F)
Orifice	: 3mm
M.O.C. of Body	: Polyacetal
M.O.C.Plunger	: SS410 with antirust coating
M.O.C.Plunger Housing	: Brass with Ni Plating
Seals	: Food Grade Silicon



Goa's leading suppliers of Solenoid Valves for R.O & Dental Application.
www.sheetalenterprisesgoa.com | sheetalenterprisesgoa@gmail.com